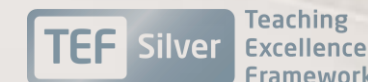


Welcome

BEng Biomedical/Medical Engineering

2020-21

School of
Engineering



Dr Mo Sanami CEng

Programme leader

Biomedical and Medical Engineering



T: +44 (0) 1204 903109

E: m.sanami@Bolton.ac.uk

School of
Engineering



Meet the rest of the team

- Diverse Team
- Industrial Experience and Research mix
- All Fellows of the HEA (minimum)
- All Members of Professional Engineering Bodies (minimum)

Other point of contact



Prof Peter Myler



Dr Andy Baldwin



Our Programmes

- BEng (Hons) Biomedical Engineering
- BEng (Hons) Biomedical Engineering with Foundation
- BEng (Hons) Medical Engineering

- MSc Biomedical Engineering (September or January start)
- MRes
- MPhil
- PhD



Specialisms in Biomedical Engineering

- Software & Electronics
- Management & Executive
- Manufacturing
 - ✓ Install, adjust, maintain, repair, or provide technical support for biomedical equipment
- Regulatory and quality
 - ✓ Validation engineer
- Scientific & laboratory
 - ✓ Analyse failure, corrective and preventive action to respond to customer complaints.
- Research & development
 - ✓ Design, develop and test all aspects of medical/surgical components, equipment, and instruments.



Software & Electronics



Management & Executive



Manufacturing



Research & Development



Scientific & Laboratory



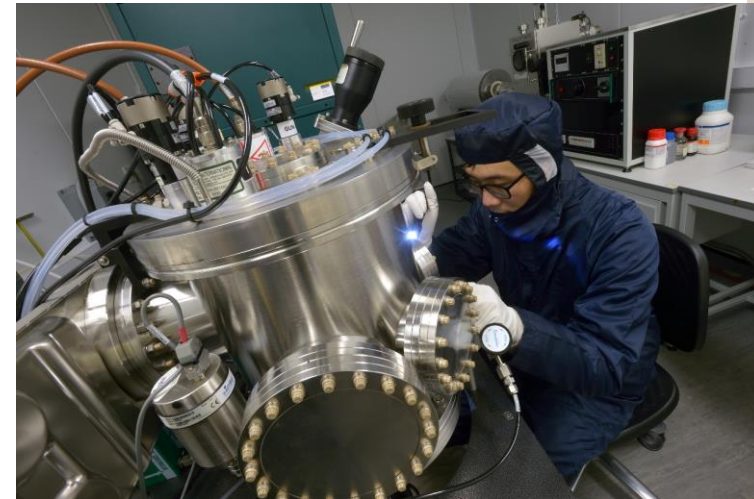
Regulatory & Quality



Design

Examples of what and how you will Learn

- Mixture of classroom, studio, workshop
- Modest class sizes
- Accessible staff
- A personal approach
- Industry standard software
 - SolidWorks
 - Simulink
 - Matlab
 - Ansys
- Student Voice
- Personal tutor



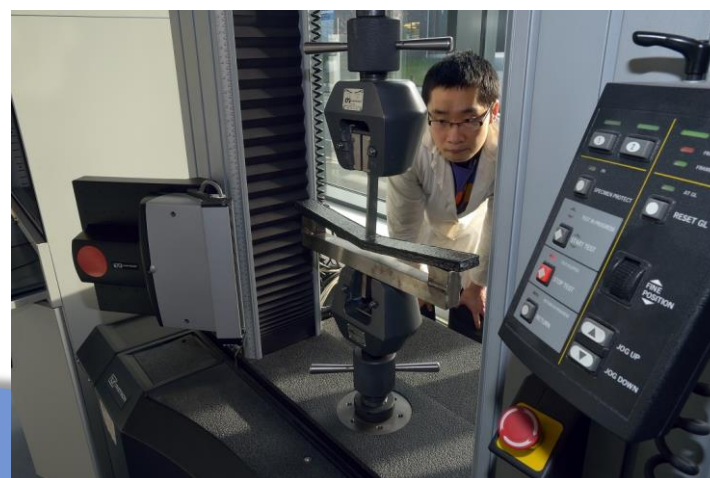
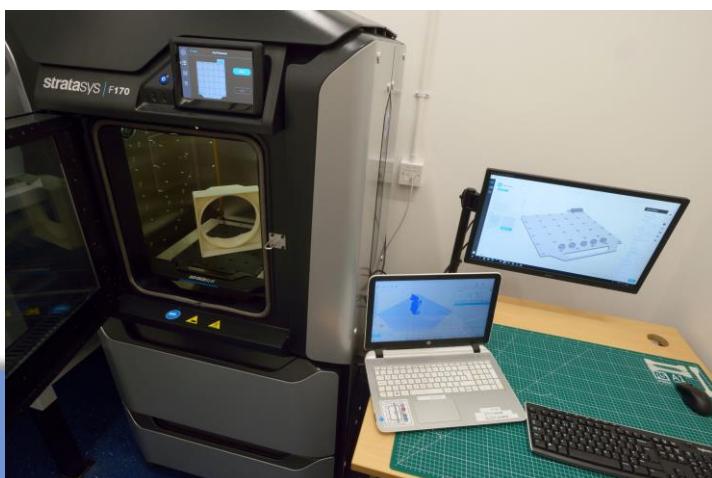
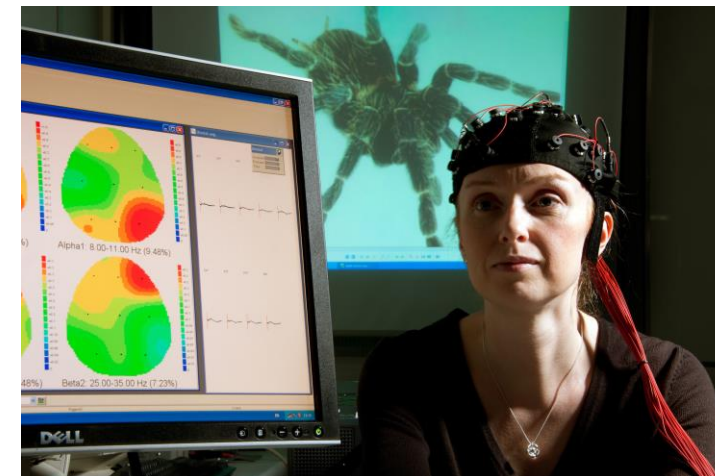
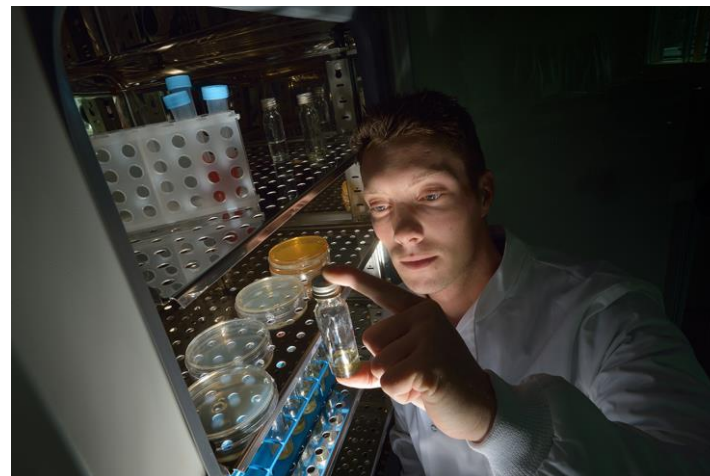
How you will Learn

Year 1 Modules
Molecular Principles of Biomedical Engineering
Introduction to Biomechanics
Medical Sensory Devices and Measurement
Clinical Anatomy and Physiology
Biomedical Engineering Projects and Systems

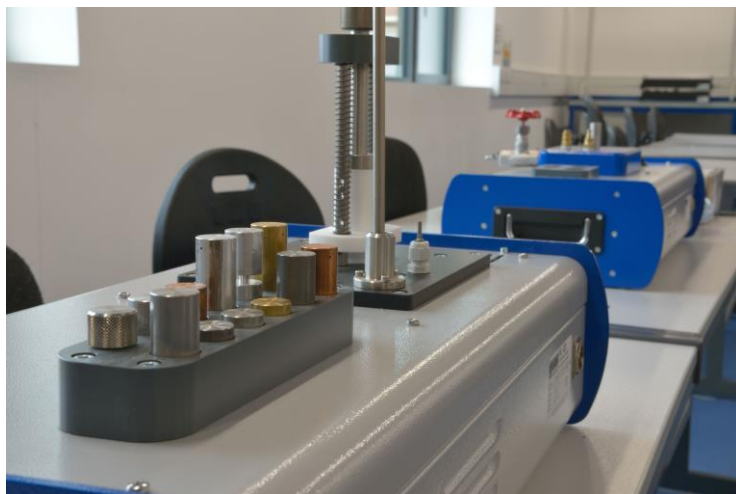
Year 2 Modules
Biomedical Engineering Modelling & Analysis
Medical Instrumentation and Control
Intermediate Biomechanics
Technology in Advanced Musculoskeletal Diagnosis and Treatment
Group Project and Investigation
Biomechatronics and Medical Devices

Year 3 Modules
Medical Equipment Technology
Simulation of Medical Engineering Systems
Advanced Biomechatronic Systems
Advanced Biomechanics
BEng Individual Project
Tissue Engineering and Regenerative Medicine
Molecular and Synthetic Bioengineering
Management and Enterprise in Engineering

Examples of what and how you will Learn



Examples of what and how you will Learn



Programme structure

- All modules UK-SPEC compliant
- Modular structure
- Combination of Assessment methods
- Regular Feedback
- CPD embedded

Today < > 30 Sep – 4 Oct 2019 month week day list

	Mon 30/9	Tue 1/10	Wed 2/10	Thu 3/10	Fri 4/10
all-day					
08					
09	09:00 - 10:30 Teaching - Lecture ATT3033-19-A3 [Foundation Principles 1] ATT3033-19-A6 [Foundation Principles 1]	09:00 - 10:30 Teaching - Lecture ATT3033-19-A3 [Foundation Principles 1] ATT3033-19-A6 [Foundation Principles 1]			09:00 - 10:30 Teaching - Lecture ATT3035-19-A3 [Engineering Study Skills] ATT3035-19-A6 [Engineering Study Skills]
10					
11	11:00 - 12:30 Teaching - Lecture ATT3033-19-A3 [Foundation Principles 1] ATT3033-19-A6 [Foundation Principles 1]	11:00 - 12:30 Teaching - Lecture ATT3033-19-A3 [Foundation Principles 1] ATT3033-19-A6 [Foundation Principles 1]			11:00 - 12:30 Teaching - Lecture ATT3035-19-A3 [Engineering Study Skills] ATT3035-19-A6 [Engineering Study Skills]
12					
13	12:45 - NCA Sports - Toning	12:45 - NCA Sports - Yoga	12:45 - NCA Sports - Pilates	12:45 - NCA Sports - Yoga	
14	13:30 - 15:00 Teaching - Practical/Workshop ATT3037-19-A1 [Foundation Principles 0] ATT3037-19-A2 [Foundation Principles 0]	13:30 - 15:00 Teaching - Practical/Workshop ATT3037-19-A1 [Foundation Principles 0] ATT3037-19-A2 [Foundation Principles 0]			13:30 - 15:00 Teaching - Lecture ATT3035-19-A3 [Engineering Study Skills] ATT3035-19-A6 [Engineering Study Skills]
15					
16	15:30 - 17:00 Teaching - Practical/Workshop ATT3037-19-A1 [Foundation Principles 0] ATT3037-19-A2 [Foundation Principles 0]	15:30 - 17:00 Teaching - Practical/Workshop ATT3037-19-A1 [Foundation Principles 0] ATT3037-19-A2 [Foundation Principles 0]			15:30 - 17:00 Teaching - Lecture ATT3035-19-A3 [Engineering Study Skills] ATT3035-19-A6 [Engineering Study Skills]
17					

Today < > 30 Sep – 4 Oct 2019 month week day list

	Mon 30/9	Tue 1/10	Wed 2/10	Thu 3/10	Fri 4/10
all-day					
08					
09					
10					
11	11:00 - 12:30 Teaching - Lecture BME4003-19-A [Introduction to Biomechanics] M1-022 - Teaching Room [30]	11:00 - 12:30 Teaching - Tutorial/Seminar BME4007-19-A [Biomedical Engineering Projects and Systems]		11:00 - 12:30 Teaching - Lecture BME4002-19-A [Molecular Principles of Biomedical Engineering]	
12					
13	12:45 - NCA Sports - Toning	12:45 - NCA Sports - Yoga	12:45 - NCA Sports - Pilates	12:45 - NCA Sports - Yoga	
14	13:30 - 15:00 Teaching - Lecture/Practical BME4003-19-A [Introduction to Biomechanics] Bolton One - Sport Science Lab 2 [03-00-045]	13:30 - 15:00 Teaching - Group/Team Projects BME4007-19-A [Biomedical Engineering Projects and Systems]		13:30 - 15:00 Teaching - Practical/Workshop BME4002-19-A [Molecular Principles of Biomedical Engineering]	
15					
16	15:30 - 17:00 Teaching - Lecture/Practical BME4003-19-A [Introduction to Biomechanics] Bolton One - Sport Science Lab 2 [03-00-045]	15:30 - 17:00 Teaching - Group/Team Projects BME4007-19-A [Biomedical Engineering Projects and Systems]		15:30 - 17:00 Teaching - Practical/Workshop BME4002-19-A [Molecular Principles of Biomedical Engineering]	
17					

Academic Calendar 2019/20

18/07/19

Academic Year	Date (Week Beginning)	Academic Week	Semester	Teaching Week	Core Activity	Assessment	Appeals	Mit. Circs.
	16/09/19				Enrolment New Full time students & Induction activities			
	23/09/19	1	Semester 1	1	Teaching		Appeal submission deadline: 28-Sept-19	
	30/09/19	2		2				
	07/10/19	3		3				
	14/10/19	4		4				
	21/10/19	5		5			Appeals Panels for refer/defer at August submissions	
	28/10/19	6		6			September Resit Exam Week	
	04/11/19	7		7				
	11/11/19	8		8		Careers Fair (14/11/2019)		
	18/11/19	9		9				
	25/11/19	10		10				
	02/12/19	11		11				
	09/12/19	12		12				
	16/12/19	13		13			Deadline for refer/defer work (Sept.19): 20-Dec-19	
	23/12/19					Bank Holidays Wed 25 Dec. & Thurs 26 Dec.		
	30/12/19					Bank Holidays Wed 1 Jan.		
	06/01/20	14		14		Teaching or Assessment Preparation Week		
	13/01/20	15	15		Semester 1 Exam Week	Semester 1 Exam Week		
	20/01/20	16	16		Teaching or Assessment Week			Mit. Circs. Deadline: 24-Jan-20

NAVIGATION
Dashboard

- Site home
- ▶ Site pages
- ▼ My courses
 - ▶ LEAP-AHEAD-2019
 - ▶ BME4004-18-UOB-J
 - ▶ BME5002-18-UOB-J
 - ▶ BME6009-18-UOB-J
 - ▶ AKB2-TUT-MBIO-MBE-18
 - ▶ BME6010-18-UOB-A
 - ▶ BME4002-18-UOB-A
 - ▶ BME6008-17-UOB-A
 - ▶ BME5001-17-UOB-A
 - ▶ AKB2-TUT-MBIO-MBE-17
 - ▶ AN2-PDR-FDY-ENG-18
 - ▶ BS9-GTO-18
 - ▶ CHS1-EEE-PRO-17
 - ▶ EDM7100-18-UOB-J
 - ▶ EDM7041-17-UOB-J
 - ▶ EDM7040-17-UOB-A
 - ▶ EEM7010-18-UOB-A
 - ▶ HMS-DATA-PROTECTION-16
 - ▶ JPE1-GDPR-17
 - ▶ BME6008-18-UOB-A
 - ▶ AME5011-18-UOB-A
 - ▶ KRG1-QP-BIO-ENG-18
 - ▶ AME6011-18-UOB-A
 - ▶ KRG1-EGP-17

MOODLE COURSE MANAGEMENT - STAFF ACCESS ONLY

Select the button below to add new Moodle courses linked to SITS modules, create Non-SITS courses, clone existing Moodle courses and to manage existing Moodle courses .

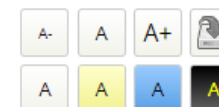
[Manage My Moodle Courses](#)
COURSE OVERVIEW
[Timeline](#)
[Courses](#)
[In progress](#)
[Future](#)
[Past](#)

LEAP-AHEAD-2019 LEAP AHEAD 2019

At the University of Bolton, we are committed to helping every student to achieve their potential. One of the ways we do this is to ask ...


BME4004-18-UOB-J Medical Sensory Devices and Measurements

summary goes here

ACCESSIBILITY


[Launch ATbar](#) (always?)

PRIVATE FILES

No files available

[Manage private files...](#)

LATEST BADGES

You have no badges to display

CALENDAR

September 2019						
Sun	Mon	Tue	Wed	Thu	Fri	Sat
1	2	3	4	5	6	7
8	9	10	11	12	13	14
15	16	17	18	19	20	21
22	23	24	25	26	27	28
29	30					

Attendance!!

- Attendance is very important
- If you are not able to attend any lectures please contact module tutor/programme leader
- Deadlines are a common everyday occurrence in our busy lives. As soon as you are given a **deadline** for a task/assignment, put it in your diary and **work backwards** from that date to ensure you achieve it on time.

Marks Register Details (ID: 23246640)

Student	32	33	34	35	36	37	40	Min	Comment	Absent	Late	Att %	Absent	Late	Att %
	A	A	A	A	A	A	A			7		0%	7		0%
	O	/	/	A	/	A	L	40		2	1 / 5	71%	2		71%
	/	A	A	L	/	/	/			2	1 / 5	71%	2		71%
	/	/	/	/	/	/	/					100%			100%
	/	/	/	/	/	/	/					100%			100%
	/	/	O	/	/	/	/					100%			100%
	/	/	/	O	/	A	/			1		86%	1		86%
	A	A	O	A	/	O	/			3		57%	2	1 / 5	71%
	/	/	O	/	/	A	/			1		86%	1		86%
	A	A	A	A	/	A	A			6		14%	4		43%
	/	/	/	/	/	/	/					100%			100%
	/	/	/	A	/	A	/			2		71%	2		71%
	/	/	/	/	/	/	/					100%			100%
	/	O	/	/	/	/	L	30			1 / 7	100%			100%
	A	/	O	/	/	A	/			2		71%	2		71%
	A	/	A	L	/	/	L	40		2	2 / 5	71%	2		71%
	$\frac{5}{16}$	$\frac{4}{16}$	$\frac{4}{16}$	$\frac{5}{16}$	$\frac{1}{16}$	$\frac{7}{16}$	$\frac{2}{16}$			28	5	75%	25	1	78%

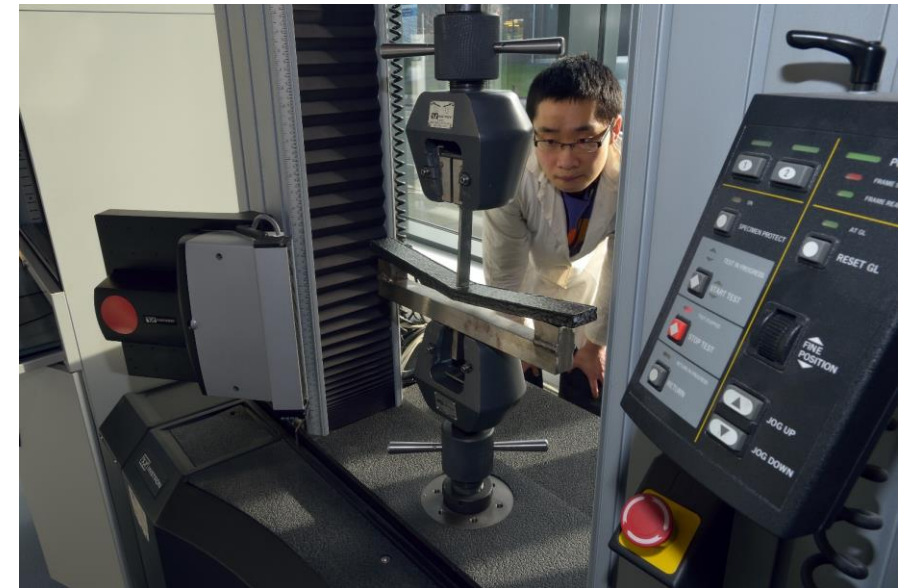
Professional Body Relationships and Value Added

- IMechE Accreditation
- IPEM
- IMechE Challenge



IPEM Institute of Physics and
Engineering in Medicine

- Alliance Learning partnership
- CSWA Certification
- Ras Al Kamiah (study abroad)
- Hosting IMechE events



Industry Advisory Board

- Sellafield
- RLC - Calendar
- Ajax Ltd
- Philips Uk
- Melba Swintex Ltd
- Viridor – Energy Recovery Facility
- Automarine Cables & Components Ltd
- Movetech UK
- SENKO Group
- Trade Golf Supplies Ltd



Transforming waste™



Biomedical/Medical Engineer Programme Level HE6

Core modules:

For Biomedical and Medical Engineering

BME6008: Project 40 credits

SEMESTER 1 and 2

<https://modules.bolton.ac.uk/BME6008>

AME6013: Management and Enterprise in Engineering 20 credits

SEMESTER 2

<https://modules.bolton.ac.uk/AME6013>

Biomedical/Medical Engineer Programme Level HE6

Optional modules – you can choose three from six:

For Medical and Biomedical Engineering 20 credits each

BME6001: Medical Equipment Technology

SEMESTER 2

<https://modules.bolton.ac.uk/BME6001>

BME6002: Simulation of Medical Engineering Systems

SEMESTER 1

<https://modules.bolton.ac.uk/BME6002>

BME6003: Advanced Biomechatronic Systems

SEMESTER 1

<https://modules.bolton.ac.uk/BME6003>

Biomedical/Medical Engineer Programme Level HE6

Optional modules – you can choose three from six:

For Medical and Biomedical Engineering 20 credits each

BME6007: Advanced Biomechanics

SEMESTER 2

<https://modules.bolton.ac.uk/BME6007>

BME6009: Tissue Engineering and Regenerative Medicine

SEMESTER 1

<https://modules.bolton.ac.uk/BME6009>

BME6010: Molecular and Synthetic Bioengineering

SEMESTER 2

<https://modules.bolton.ac.uk/BME6010>

Likely staff: TBC